



**Happilac**<sup>TM</sup>  
CONSCHEM  
CONSTRUCTION CHEMICALS

# HAPPILAC HI-GROUT G-100

Hi-Performance, Polymer Modified Cementitious Unsanded  
Grout Recommended For Marble & All Kinds of Tiles



# HAPPILAC HI-GROUT G-100

## RECOMMENDED FOR MARBLE & ALL KINDS OF TILES

Happilac Hi-Grout G-100 is a premixed cementitious powder formulated as a high performance water resistant dry set filling mortar for ceramic wall tiles, floor tiles, swimming pool tiles, marble and terrazzo tiles. It is intended for both porous and non-porous ceramic tiles. It can be used on concrete lightweight brick, block and plasterboard on interior and exterior surfaces. Happilac HI-Grout G-100 can also be used on surfaces plastered with water resistant plaster render or base WR on damp concrete interior. Happilac HI-Grout G-100 is made specifically for grout line smaller than 1/8 inch width.

## APPLICATION PROCEDURE

STEP  
01



GIVE 24 HOURS FOR  
DRYING BETWEEN FIXING  
TILES AND GROUTING

STEP  
02



MIX GROUT POWDER  
WITH WATER TO GIVE A  
SMOOTH, THICK  
CONSISTENCY

STEP  
03



LEAVE TO STAND  
15 MINUTES  
BEFORE USING

STEP  
04



APPLY TO TILE  
JOINTS WITH A  
SQUEEGEE, BRUSH  
OR SPONGE

STEP  
05

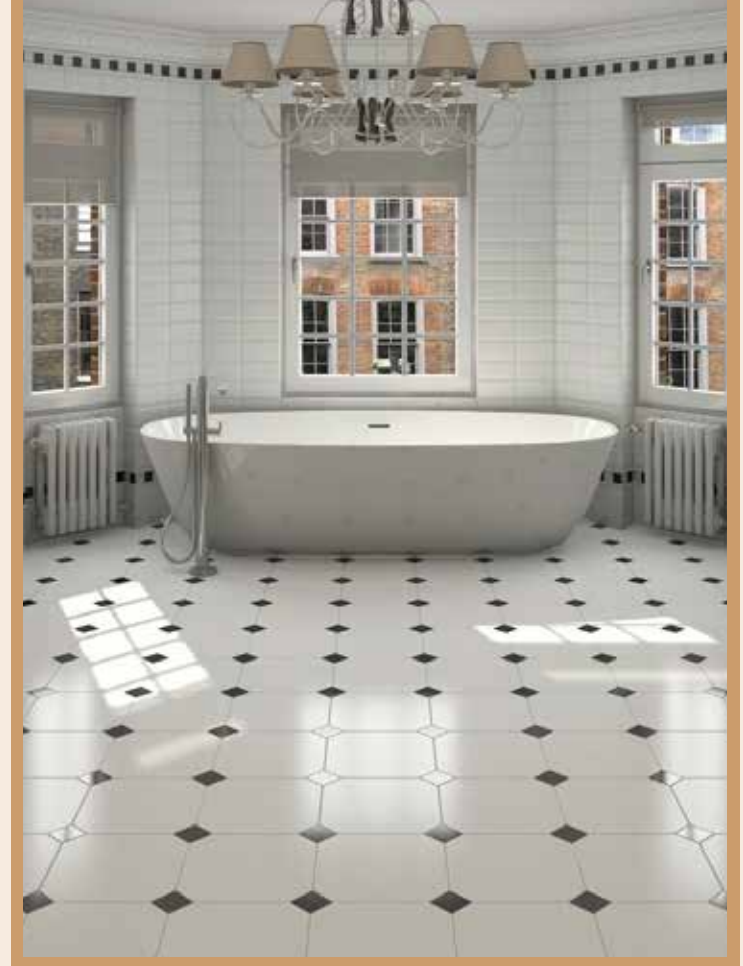


REMOVE SURPLUS  
GROUT WITH A  
DAMP SPONGE

STEP  
06

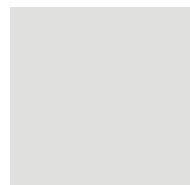


POLISH TILES  
WITH A DRY CLOTH  
AFTER GROUTING  
IS COMPLETED

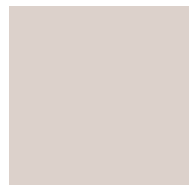


## ADVANTAGES

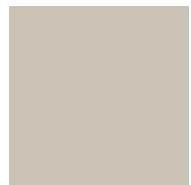
- ◆ Stain Resistant
- ◆ Fungal and Mould Resistant
- ◆ Water Resistant
- ◆ Excellent Application Properties
- ◆ Hi-Bond Strength
- ◆ Suitable for Tropical and Hot Climate Condition



Bright White 002



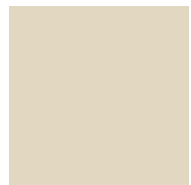
Ash White 003



Marble Ash 004 New



Khakki 005 New



Light Ivory 006



Ivory 007



Shadow Ivory 008 New



Beige 009



Gold \* 010



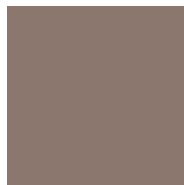
Saltillo 011



Camel Brown 012



Rust Brown 013



Tobacco Brown 014



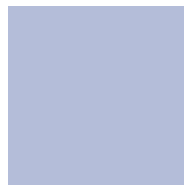
Terracotta 015



Burgundy 016



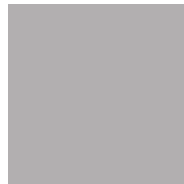
Peach 017 New



Light Blue 018



Dark Blue 019



Light Grey 020



Slate Grey 021



Pink 022



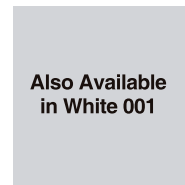
Sage Green 023



Masjid Green 024



Jet Black \* 025



**Also Available  
in White 001**



**CONSTRUCTION CHEMICALS**

**Special colors  
will be available  
on request**

**\* Special Shades,  
Special Price**



\*Due to your display settings, the colors shown on screen may differ from those physically applied

■ The patterns on this card show approximate colors only.

**KARSS Paint Industries (Pvt.) Ltd.**

Taj Colony, Millat Road, Faisalabad,  
38050, Pakistan.

Ph: +92 41 886 1673, 878 3444, 858 1929

Fax: +92 41 878 0038

**Happilac Conschem Factory (Unit 1)**

Sajjad Industrial Estate, Millat Road, Faisalabad, Pakistan.

Ph: +92 41 876 7853

**Happilac Conschem Factory (Unit 2)**

Khasra No. 197, Moza Lohi Bher, Islamabad, Pakistan.

**Head Office:**

West Canal Road, Faisalabad, Pakistan.

Ph: +92 41 871 0455, 850 1212

Fax: +92 41 850 1209



UAN: +92 41 111 00 1978



conschem@happilacpaints.com



MADE IN PAKISTAN



Nr. Certificat: 01829  
ISO 14001: 2015



Nr. Certificat: 02803  
ISO 9001: 2015



Nr. Certificat: 01441  
OHSAS 18001: 2007

Customer Service:

**08000-1978**